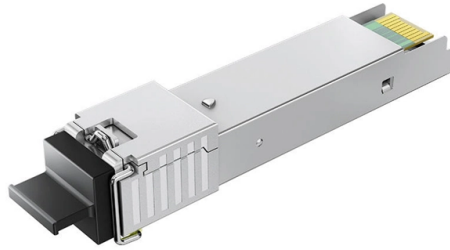


# The fiber optic switch can operate normally after a power outage



## Overview

Non-latching switches return to a default state (or a specific “safe” state) when power is lost. Is this normal that a power cut and just completely break your open reach box?

WTF has happened?

Those can go bad because of power outages. On the bottom of your ONT is a factory reset button. There can also be multiple outputs, and the light from one input can be sent to any of. Fiber optic networks are celebrated for their speed and reliability, but even the best systems can encounter problems. These high-speed, high-capacity communication networks are increasingly replacing copper cables, offering superior performance and. A fiber optic switch is a device that allows optical signals to be selectively switched from one optical fiber to another. From fiber ONT battery backup to portable power stations, here's how to protect your.



## Article Content

### Fiber Optic Troubleshooting: Expert Guide for Common

Troubleshoot fiber optic issues like a pro with our expert guide. Resolve common problems and ensure seamless connectivity.

### Does Fibre Use Electricity?

What this means is that if power fails, these components stop functioning, effectively halting the transmission and receipt of data. This situation suggests that even

### Fiber Internet During a Power Outage

Ponderosa is proud to deliver Fiber-to-the-Home ("FTTH") technology to your service address. FTTH service utilizes an Optical Network Terminal ("ONT") that is powered locally from your electrical

### Why Does the Phone Still Work When the Electricity Goes Out?

Why do landline phones work during a power outage? In order to work, phones require six to 12 volts at around 30 milliamps. Because they run on minimal power, the phone company has enough

### Fiber: How long will it continue to work when the power goes out ...

Because the fiber switches are passive, they require no added electricity to split the signals in passive optical switches. It would take a power outage at the serving Central Office to create a outage from

### How to keep your fiber internet up during a power outage

Unlike traditional cable internet, which relies on electricity at many points in the field, a fiber-optic network does not require electricity in the field to

### Fiber-optic cable

A fiber-optic cable, also known as an optical-fiber cable, is an assembly similar to an electrical cable but containing one or more optical fibers that are used to carry

### Fiber Optic Switch: A Comprehensive Guide

There are three main types of fiber optic switches: mechanical, solid-state, and acousto-optic. Each of these types has its own advantages and

### Why Network Equipment Requires a Reboot After a Power Outage

This article explains how power disruptions can cause network equipment to retain stale data, mismanage IP leases, and disrupt VoIP functionality, leading to issues like failed phone

### Everything you need to know about Fiber Optic Testing

Contents After the cables are installed and terminated, it's time for testing. For every fiber optic cable plant, you will need to test for continuity, end-to-end loss and

Does fiber internet still work in a storm? | Ziplly Fiber blog

Fiber-optic connectivity between the Central Offices and homes and businesses does not require electricity anywhere in the field to operate. This

How to Keep Fiber Internet Working During Power Outages

For most homes, a compact UPS can bridge short outages, while larger portable power stations can maintain service overnight. The key is to connect both your

Fiber-optic Switches - technologies, performance

Fiber-optic switches are optical switches in the context of fiber optics. The simplest device is an on/off switch with one input and one output, which allows light to

Solved: Re: What would cause all fiber optic ports on a switch to go ...

Traffic is on average very low as the switches are connected to industrial equipment that requires very little bandwidth. No errors on the interfaces, the fiber links have been checked and they

POE Switch offline after power outage : r/Ubiquiti

After a power outage, everything comes back online fine except the POE Switch. The switch seems to lose its configuration because power cycling it doesn't fix the situation.

Fiber Network Troubleshooting - Common Issues & Fixes

Learn how to troubleshoot fiber networks. Identify common issues like high loss, dirty connectors, and signal drops, with practical solutions for optical links.

fiber optics during power outages : r/FiberOptics

Hi. I live in a country that experiences major power outages right now. Sometimes my home has electricity, and my internet provider doesn't, and my ethernet

Does Cable Internet Work During a Power Outage?

Because most of these elements need power to work. Data centers, routers, switches, routers, modems —all of these are connected to a power

Power Outage? Here's How to Keep Your Internet On

Whether the cause is severe weather or a blown circuit or whether your power is out for a few hours or a couple of days, here's how you can stay connected to the

How to Keep Fiber Internet Working During Power Outages

Power outage? Your fiber internet doesn't have to go down. Explore ONT backup, WiFi power tips, and local support from 24-7 & West Wisconsin Telcom.

Why Do Power Outages Affect My Internet, Cable and

But when there's a power outage, the availability of fiber-based services can be affected for several reasons. Power for Network Equipment: Service Electric's

Fiber Optic Troubleshooting: Expert Guide for Common

Fiber optic troubleshooting is an essential skill for network administrators, technicians, and engineers responsible for maintaining and

## Contact Us

For more information, pricing, or custom solutions, please contact us:

Website: <https://fivesunsecoenergy.fr>

Email: [sales@fivesunsecoenergy.fr](mailto:sales@fivesunsecoenergy.fr)

Phone: +33 6 41 83 57 29

Address: 5 Rue de la Bourse, 75002 Paris, France

This document is for informational purposes only. Specifications subject to change without notice.

