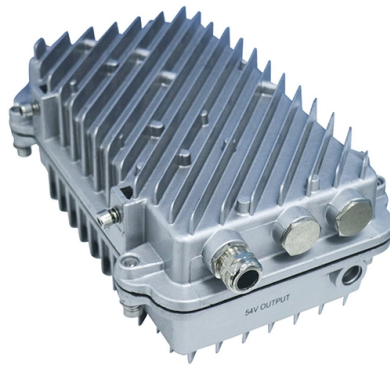


How to tell if a terminal box has a network connection



Overview

First, you will use the `lshw` command with the `-C network` option to list detailed information about your network hardware. How To check if connected to internet using shell script?

In this article I will share multiple commands and examples to check if connected to internet for your Linux machine. At the end of the article I will also share some example to test internet connection from the Linux to external network. Use the following basic network troubleshooting or identification methods to find network connectivity information: Many administrators find it easier to use command-line commands for these tests, but graphical tools are also available. Linux provides several powerful tools that allow users to inspect and analyze active network connections. If you want to check the status of a specific interface, you can use the `'ifconfig'` command followed by the interface name. Preferably using BASH scripting only.

Article Content

Find your Windows product key

Generally, if you bought a physical copy of Windows, the product key should be on a label or card inside the box that Windows came in. If Windows came preinstalled on your PC, the product key should

How to Detect a Linux Physical Cable Connection

If you've ever needed to know whether a physical cable is connected to a network port on your Linux system, you don't necessarily need to be right in front of the computer or server to check.

How to Find Your Wi-Fi Password

Modern Wi-Fi routers --- and the combined router/modem units offered by many Internet service providers --- come with a default Wi-Fi network

How to check if a network adapter is present in Linux

In this lab, you will learn how to check if a network adapter is present in your Linux system. We will explore three common methods to achieve this. First, you will use

How to Work with the Network from the Linux Terminal:

Whether you want to download files, diagnose network problems, manage your network interfaces, or view network statistics, there's a terminal

Check whether network cable is plugged in without bringing ...

Check whether network cable is plugged in without bringing interface up Ask Question Asked 14 years, 5 months ago Modified 9 years, 3 months ago

How to Check Internet Connectivity in Linux Terminal

So how can you effectively monitor connectivity right from the terminal? This comprehensive guide details multiple methods. As a fellow Linux system administrator, I know the

How To Check Network Connection Configuration In

Learn how to find network interface card details on Ubuntu. Here is how to check network connection configuration in Ubuntu terminal. This way, on

How to check network adapter status in Linux

Linux comes with various command line utilities to dig information about network adapters such as Ethernet, WiFi and other installed in your

The Ultimate Guide to Terminal Junction Box Wiring:

Learn how to properly wire terminal junction boxes for electrical connections. Understand the importance of proper wiring techniques, safety precautions, and

Business Standard

Hier sollte eine Beschreibung angezeigt werden, diese Seite lässt dies jedoch nicht zu.

4 Ways to Check Network Status on Linux

To check the network status in Linux, you can use the "ifconfig" command. This command will give you information on the status of your network

Linux View Network Connections: A Comprehensive Guide

Linux provides several powerful tools that allow users to inspect and analyze active network connections. This blog post will delve into the fundamental concepts, usage methods,

How To Identify Star and Delta Motor Terminal

By looking inside the terminal box of a motor you can easily determine if the motor is wired in star or delta. The connections are located in the

How to Test Ethernet Cable: A Step-by-Step Guide

Learn how to test Ethernet cable using a cable tester and troubleshoot without one. Ensure your network runs smoothly with our step-by-step guide.

7 Linux Commands to Check Network Connectivity

Use these command-line commands to display and troubleshoot network connectivity and performance issues on Windows or Linux systems.

How to Check if there is Network connection/Internet connection using ...

We want to see if we have any network connections or internet connections on the system. tcptrack shows the status of TCP connections it sees on a given network interface, monitors

Fiber Terminal Box vs Junction Box: Key Differences

Compare fiber terminal box vs junction box in functions, applications, and installation. Learn which suits FTTH fiber vs electrical wiring.

How to Check Network Connections in Mac Terminal?

How to Check Network Connections Using Netstat in Mac Terminal Check Network Connections Using Netstat The netstat command in Mac Terminal is a powerful

How to check the physical status of an ethernet port in

In other words, the UP you can see indicates the system is configured to try and use the NIC for networking. The NO-CARRIER here tells you what the issue

How To Check Network Connection Configuration In

Linux Users can also run the ethtool command to find out the connected state of a network cable on their system. Open terminal and execute

The Ultimate Guide to NBN FTTP Connection Box:

The NBN FTTP Connection Box is a crucial component of the National Broadband Network (NBN) that enables ultra-fast fibre internet access. Whether you're

How to Find Any Device's IP Address, MAC Address,

Every network-connected device — computers, smartphones, tablets, smart home gadgets, and more — has an IP address and a unique MAC address

How to Use Traceroute to Identify Network Problems

How Traceroute Works When you connect to a website—say, howtogeek —the traffic has to go through several intermediaries before

Detect Physical Cable Connection on Linux

Learn how to detect physical network cable connection on Linux using bash commands and ethtool. Ideal for troubleshooting remote systems.

Is there a terminal command to verify if Wifi is enabled?

Since my laptop doesnt have a Wireless Network LED indicator, I want to know if there is a command to verify if it is on or off (I'm installing the wireless

Contact Us

For more information, pricing, or custom solutions, please contact us:

Website: <https://fivesunsecoenergy.fr>

Email: sales@fivesunsecoenergy.fr

Phone: +33 6 41 83 57 29

Address: 5 Rue de la Bourse, 75002 Paris, France

This document is for informational purposes only. Specifications subject to change without notice.

