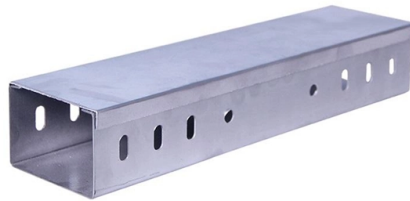


Height of wall-mounted network cabinet from the ground



Overview

The interior height, which is important for usability, is measured in U (height unit) in an internationally standardized way. Some standard dimensions have become. If I buy a 12U cabinet, can it be used on the ground?

Just going to be on carpet. If you put it on the ground, the ground becomes the wall, and then gravity. Unlike free-standing SmartRack™ Cabinets, Wall-Mount Rack Cabinets can be mounted on walls, positioned on flat surfaces or rolled under desks, tables or counters, and are perfect for housing IT equipment in rooms with limited floor space. Choose floor standing for scalable setups requiring heavy servers and future expansion. What is a Wall Mount Network Cabinet?

(Definition + Visual) A wall mount network. Security and Durability: When choosing a network cabinet, it is essential to ensure that it provides durability, security, efficiency, and scalability. The cabinet should be well-constructed and certified by independent laboratories. To ensure the secure housing of critical equipment, the cabinet.

Article Content

Standard Wall Cabinet Mounting Height

Standard Wall Cabinet Mounting Height: A Comprehensive Guide Determining the appropriate mounting height for wall cabinets is crucial for

Wall Mounted Network Cabinets: Design, Functions and Installation

Sizes vary to accommodate different equipment loads: compact units (12-24 inches in height) suit basic setups with 2-4 devices, while larger cabinets (30-42 inches) can hold multiple

12U Wall-Mounted Network Cabinet: Features and Installation Guide

Ground the switch's casing and connect the power cord to the rear power interface. Power on the switch and check for any shaking or instability. If observed, inspect the height of the padding or the

What is the mounting height of network rack? | Redway Tech

The mounting height of a network rack typically ranges from 24 inches to 84 inches (2 to 7 feet), depending on the equipment and installation requirements. Standard racks are often

Network Cabinet: Complete Guide for the Best Choice

Cabinet Height: A standard height of 42U is recommended for cabinets. Higher heights may make it difficult to access equipment located at the

Wall Mount Racks and Cabinets | Racks and Physical Support

The Swing-Out Wall-Mount (SWM) and Swing-Out Wall-Mount Reinforced SWMR Series wall-mount cabinets provide a convenient and easy-to use solution for edge, IoT, PoE and small network

A Guide to Network Racks and Wall Mount Enclosures

If you're in the market for a Network Rack Cabinet and are trying to decide on which is best for you this guide is for you. Here we will endeavor to give you some

Small Network Cabinet Guide: Wall-Mounted vs Floor-Standing

Floor-standing cabinets typically offer enhanced security features and professional-grade construction that wall-mounted units cannot match due to size constraints. Advanced Security Options The larger

Wall-Mounted Network Cabinet Installation Precautions

For a small wall-mounted server rack used in data closets, center the cabinet at approximately 1,400-1,500 mm from the floor for ergonomic access to all U positions.

Can I use a wallmount network cabinet on the ground? Or does

Help I just want a 12U cabinet, but freestanding cabinets seem to start at 18U. If I buy a 12U cabinet, can it be used on the ground? Just going to be on carpet.

Wall Mounted Data Cabinets | Data Cabinets | Server Room

The table can also be used to calculate the total "U" height of the equipment to be located in the cabinet and how much space capacity is available for future expansion.

Wall mounting network rack / cabinet with ventilation

Wall mounting network rack / cabinet with ventilation - height? Hey! I'm planning to install a wall mounted network rack / cabinet with fans on top. So my question is, what is the recommended space

What are the size standards for wall network cabinets?

Additionally, the internal layout of the cabinet, including the number and spacing of mounting rails, is optimized to ensure efficient installation and

Wall-Mount Rack Cabinet FAQ | Eaton

Wall-Mount Rack Cabinets feature adjustable mounting depths with minimums of either 3 or 17 inches and maximums of 16.5, 20.5 or 32.5 inches. To determine the maximum depth you need, measure

A Guide to Network Racks and Wall Mount Enclosures

The height of network racks is measured in what is known as "Rack Units" (1.75 inches, or 44.45mm). This means that typically when you are shopping for

Outdoor Network Cabinets - Floor Standing, Pole, Wall

Explore durable outdoor network cabinets with floor standing, pole, and wall mount options for secure installation of your network equipment.

How to Properly Install and Set Up a Network Cabinet

Installing and setting up a network cabinet system correctly is essential for maintaining an efficient and organized network infrastructure. In this

ESTEL Tips for Installing Wall Mount Server Cabinets in

Learn how to install a wall mount server cabinet in tight spaces with tips on location, ventilation, cable management, and ensuring stability for your setup.

Understanding Wall Mount Network Cabinets in Dubai,

Conclusion Finally, wall-mount network cabinets are necessary components of a well-organized and effective network architecture. They save space, safeguard

Network cabinet design considerations

Height, on the other hand, is often dependent on the room where the cabinets are located. Newer buildings are designed with tall network cabinets in mind, so you

What height should my network or server cabinet be?

What height should my network or server cabinet be? The interior height, which is important for usability, is measured in U (height unit) in an internationally standardized way. 1 U is 44.45 mm. The

Network Cabinet Selection Guide | Choosing the Right Network Cabinet ...

Learn how to choose the right network cabinet, including size, security, ventilation, and cabinet styles such as wall-mounted and floor-standing options.

What height should my network or server cabinet be?

Some standard dimensions have become established: cabinets with an external height of 1200 mm usually have a useful height inside of 24 or 25 U. At 2000 mm external height, the usable internal

Kitchen Cabinet Height Standards: What You Need to

Interior Design Blog Standard Kitchen Wall Cabinet Height Guide Design Tips
Standard Kitchen Wall Cabinet Height Guide Not sure how to hang

Wall Mount Network Cabinet vs Floor Standing: Complete 2025 Guide

Wall mount network cabinets typically offer limited depth, usually under 31.5 inches. This restriction comes from practical considerations - deeper cabinets would protrude too far from the wall, creating

Wall-Mount Cabinets | Wall-Mount Racks | Wall-Mount Network Cabinets

Wall mount cabinet is constructed from heavy-duty steel and capable of managing 6U,9U,12U or 15U of active and passive equipment. It is designed to house EIA-standard 19-inch

Contact Us

For more information, pricing, or custom solutions, please contact us:

Website: <https://fivesunsecoenergy.fr>

Email: sales@fivesunsecoenergy.fr

Phone: +33 6 41 83 57 29

Address: 5 Rue de la Bourse, 75002 Paris, France

This document is for informational purposes only. Specifications subject to change without notice.

